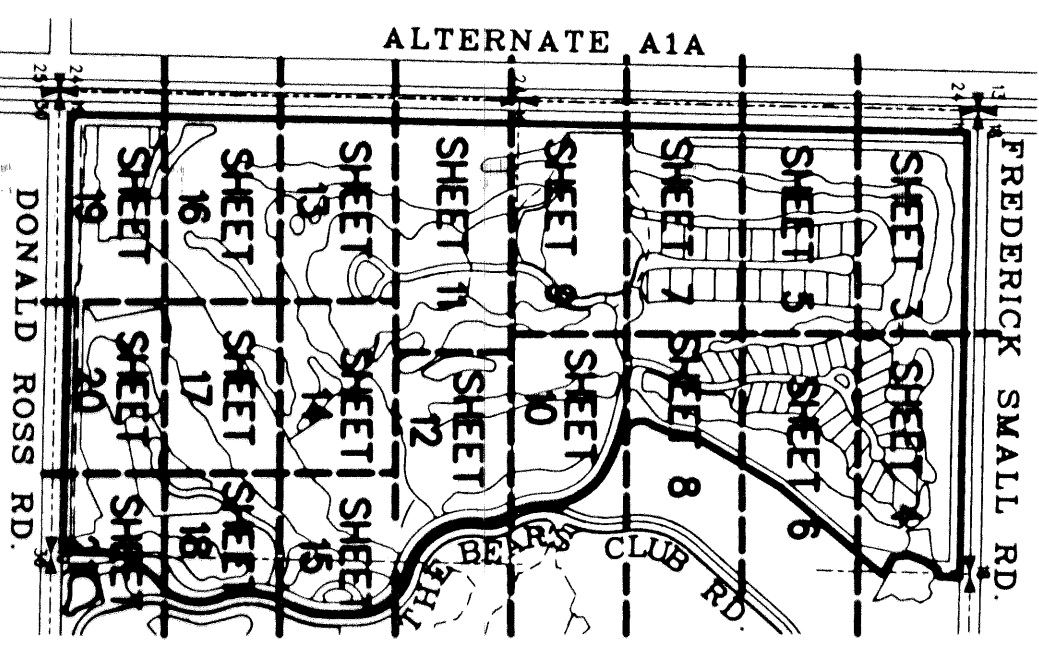
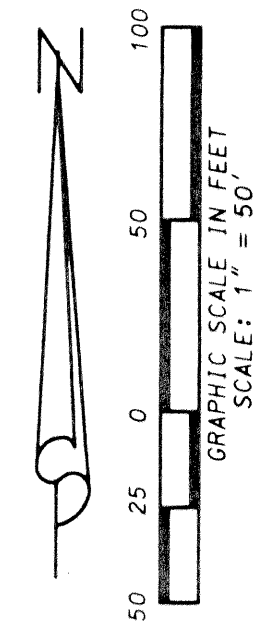
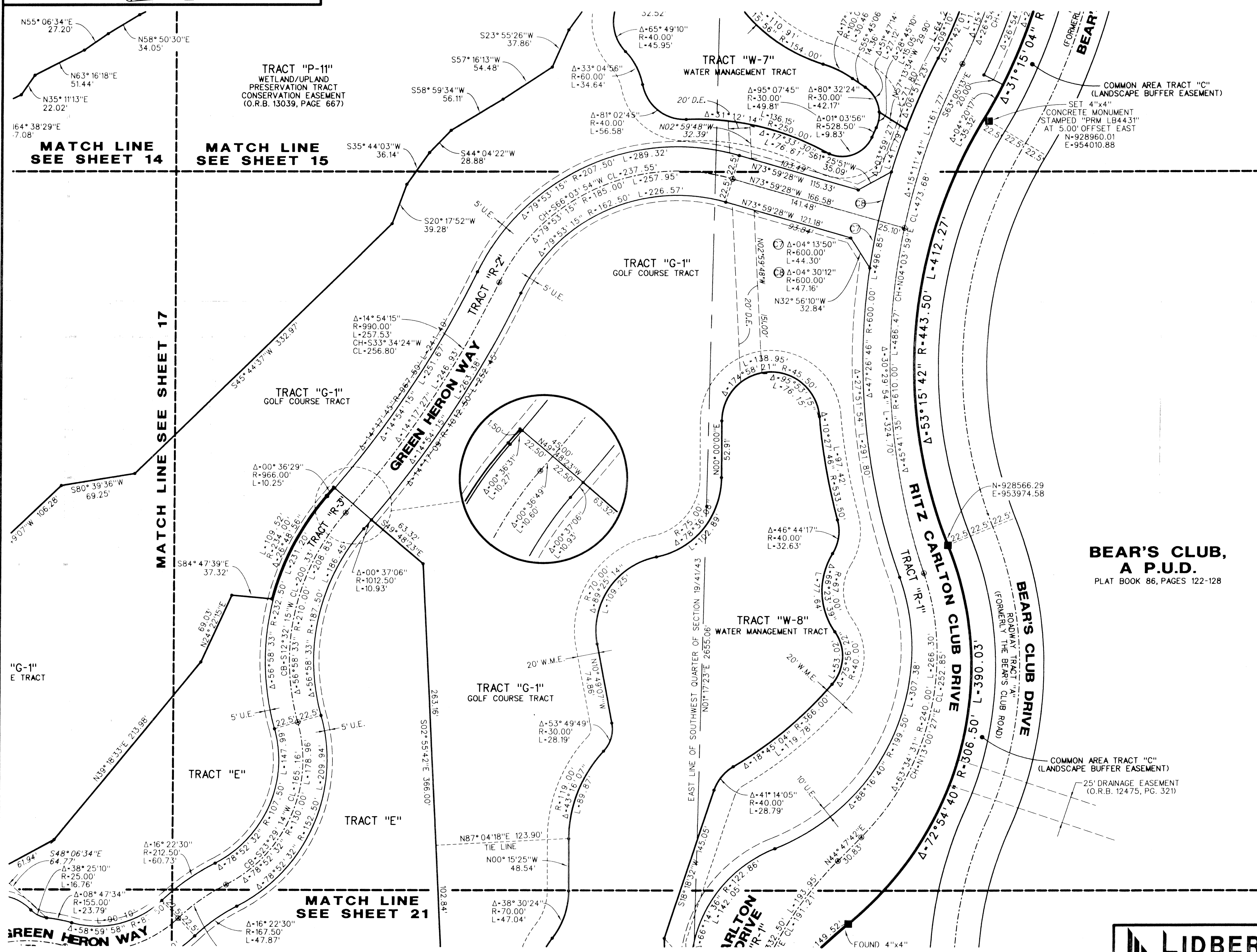


RITZ-CARLTON GOLF CLUB & SPA, JUPITER, A P.U.D.

SITUATE IN SECTION 19, TOWNSHIP 41 SOUTH, RANGE 43 EAST, TOWN OF JUPITER, PALM BEACH COUNTY, FLORIDA
DECEMBER, 2001
SHEET 18 OF 22



KEY MAP (NOT TO SCALE)



BEAR'S CLUB, A P.U.D.
PLAT BOOK 86, PAGES 122-128

COMMON AREA TRACT "C"
(LANDSCAPE BUFFER EASEMENT)
25' DRAINAGE EASEMENT
(O.R.B. 12475, PG. 321)

LIDBERG LAND SURVEYING, INC.

675 West Indiantown Road, Suite 200,
Jupiter, Florida 33458 TEL. 561-746-8454

LB4431

CAD: K:\UST \ 194143 \ RITZ \ 1690306 \ SHEET18.DGN			
REF: K:\UST \ 194143 \ RITZ \ 1690306 \ 1690306.DGN			
FLD.	FB.	PG.	JOB 00-169-306
OFF. R.W.			DATE 04/28/01
CKD. D.C.L.	SHEET 18	OF 22	DWG. D00-169P